



宮崎大学
University of Miyazaki



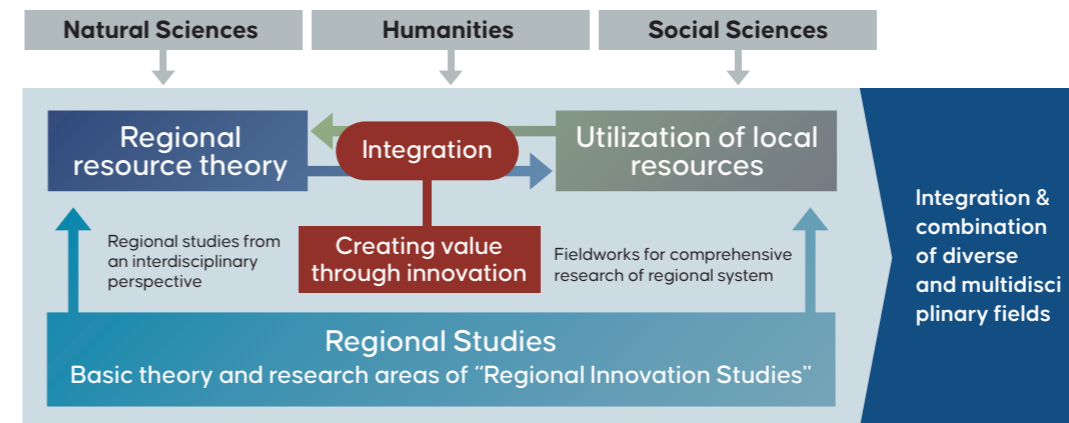
University of Miyazaki
Graduate School of
Regional Innovation



The Graduate School of Regional Innovation is an interdisciplinary program dedicated to envisioning the future of local communities and developing innovative, research-based solutions to regional challenges.

“Regional Innovation Studies”

To overcome regional challenges that are becoming increasingly diverse, complex, and serious, it is essential to integrate and combine research results from individual specialized fields such as the natural sciences, humanities, and social sciences. Society increasingly requires specialists with up-to-date, interdisciplinary expertise. At the University of Miyazaki, we are developing **Regional Innovation Studies** as an integrated educational and research field, and it is already yielding strong results



- Offer 3 interdisciplinary and multidisciplinary educational programs:
 1. Regional Studies
 2. Regional Resources Studies
 3. Regional Resource Utilization Studies
- Multi-Layered, Year-by-Year Master's Research Progress
 - Conduct practical research on PBL and other solution-oriented methodologies
 - Advance individualized research development- Integrate practical inquiry with tailored, one-to-one supervision

Characteristics of the Educational Program

1. Diverse & Interdisciplinary Curriculum

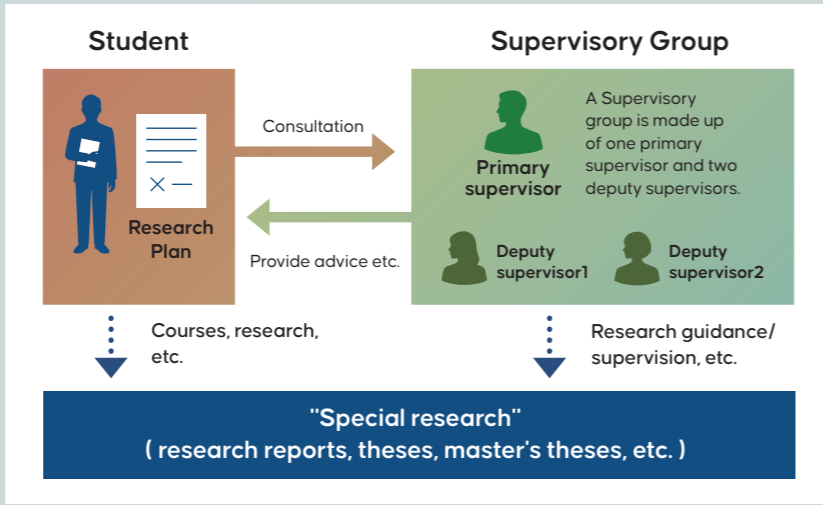
19 full-time faculty members from economics, law, agriculture, engineering, and related fields deliver specialized courses that integrate multiple disciplines. Students gain both **deep expertise** and **broad, interdisciplinary perspectives** grounded in academic and practical knowledge.

2. Integrated Curriculum Across Graduate Schools

To support advanced, cross-field study, students may take relevant courses offered by:
 Graduate School of Nursing
 Graduate School of Engineering
 Graduate School of Agriculture
 This structure enables students to acquire the **knowledge and skills needed to advance research in Regional Innovation Studies.**

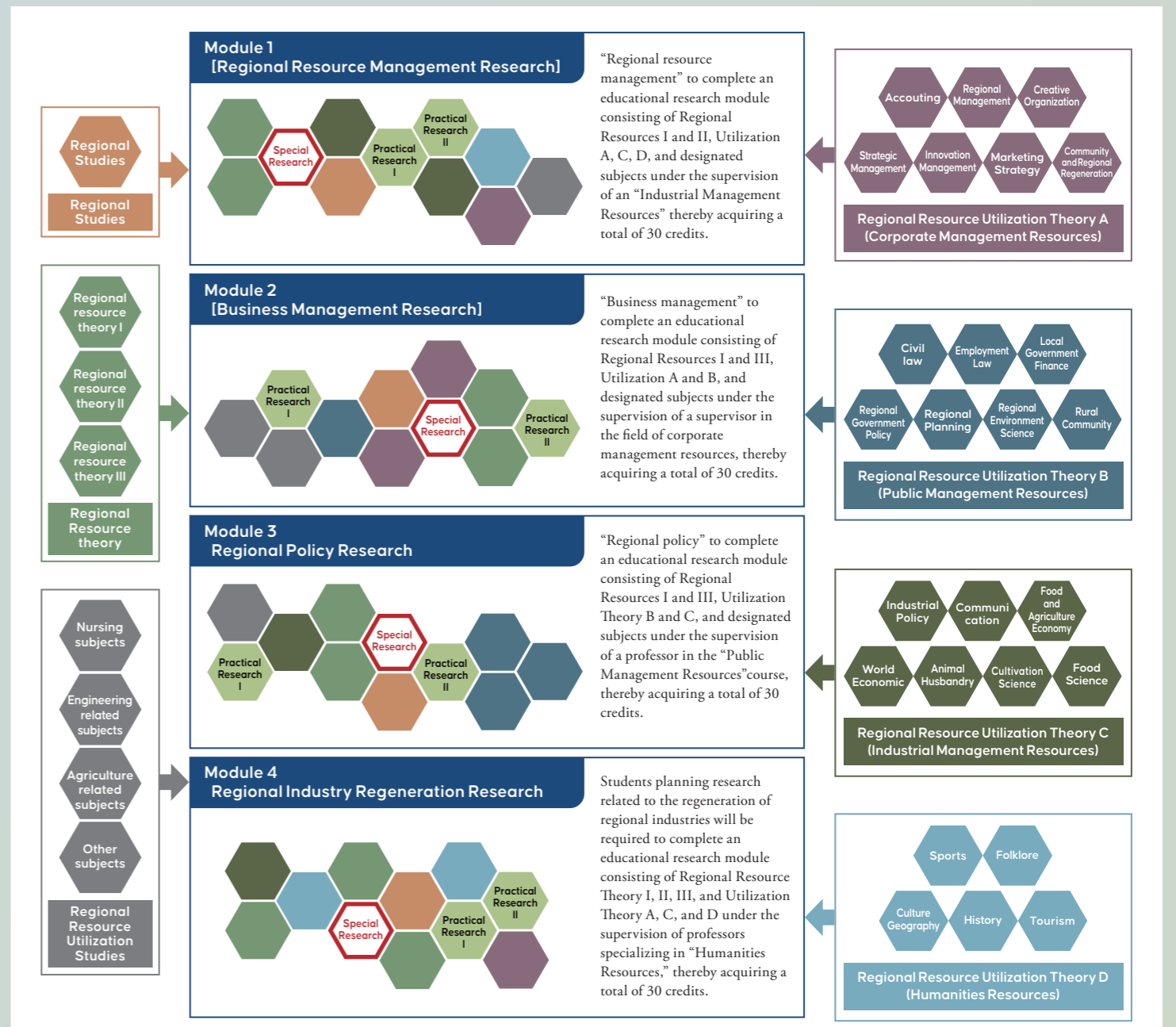
3. Structured Research Supervision

Each student is supported by a **primary supervisor** and **two deputy supervisors**, forming a supervisory group tailored to the student's research theme. This team provides:
 Comprehensive, interdisciplinary research guidance
 Individual consultations
 Career guidance aligned with students' future goals



4. Educational & Research Modules

The program offers **educational and research modules** that organically integrate:
 Regional Studies
 Regional Resource Studies
 Regional Resource Utilization Studies
 These modules create a **practical, specialized, and flexible learning environment**, allowing students to pursue research aligned with their individual interests and plans.



Who We Seek

The Graduate School of Regional Innovation welcomes:

- Recent university graduates (including expected graduates), working professionals, and individuals considering relocating to Miyazaki for study or employment.
- Applicants who are motivated to engage in regional innovation studies, address local challenges, and contribute to regional revitalization.

Our Approach to Admissions

- We promote interdisciplinary and cross-sector education that bridges the humanities and sciences, and therefore do not require a specific undergraduate major.
- Our program is designed to support students from diverse academic and professional backgrounds.
- Three admission pathways are available:
 - i. General Admission (for university graduates)
 - ii. Working Professional Admission (for applicants with at least two years of work experience)
 - iii. International Student Admission

Applicants may choose the pathway that best fits their learning goals and work–study balance.



Expertise and Graduate Profile

This graduate school cultivates professionals who, grounded in academic theory, can drive regional initiatives, create new regional and resource value, and help build sustainable local communities through advanced study in Regional Innovation Studies.

Targeted Expertise to Be Developed

- Advanced academic expertise enabling interdisciplinary research and development.
- Advanced practical expertise for generating effective, innovative solutions.
- Advanced academic expertise for systematizing and theorizing frontline technologies and professional experience.

Desired Graduate Profiles

- Highly skilled individuals capable of driving innovation.
- Highly skilled individuals able to undertake comprehensive management roles.
- Highly skilled individuals who can create new regional and resource value.

Degree Requirement

Students who complete the program in the Graduate School of Regional Innovation will be awarded the **Master's degree (Regional Innovation)**. To graduate, students must earn at least 30 credits in the required curriculum and pass the Master's thesis evaluation.

Degree

Master of Regional Innovation

Contact

Graduate School of Regional Innovation, University of Miyazaki
1-1 Gakuen-Kibanadai-nishi, Miyazaki-city, Miyazaki Prefecture,
889-2192 Japan

(Academic Affairs and Student Support Section)

Tel: +81(0) 985-58-7847

E-mail: c-kyoumu@miyazaki-u.ac.jp

For application

Visit University of Miyazaki Website: <http://www.miyazaki-u.ac.jp/>

("MENU" →

"Admissions Information" →

"Graduate School Admissions")

