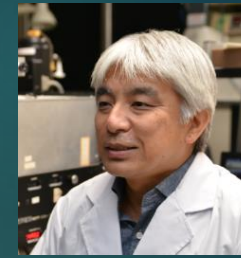


Maeda Lab.



1

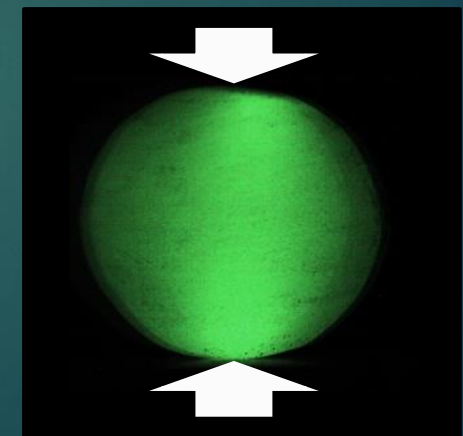
1. Phosphor - preparation and characterization

▶ Infrared phosphor:
optical amplifier for light communication



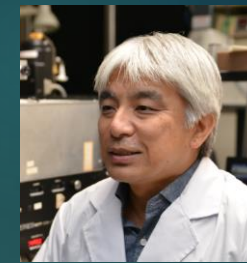
▶ X-ray stimulated phosphor:
X-ray detector for medical and security system

▶ Elastico-luminescence:
stress stimulated light emission



Pushing the sample by a pair of tweezers

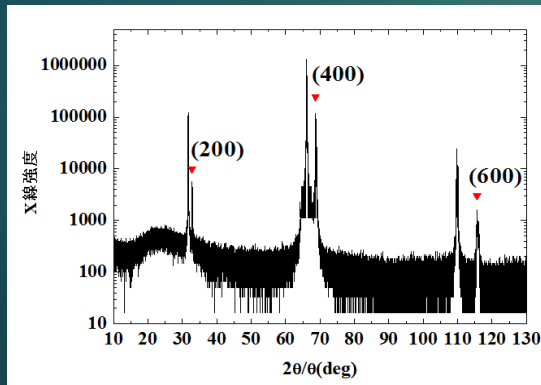
Maeda Lab.



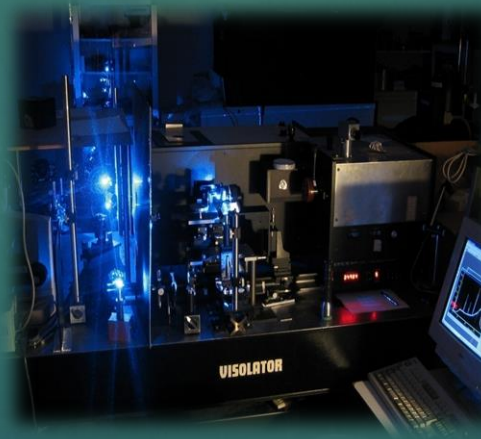
2

2. Characterization of Semiconductor films

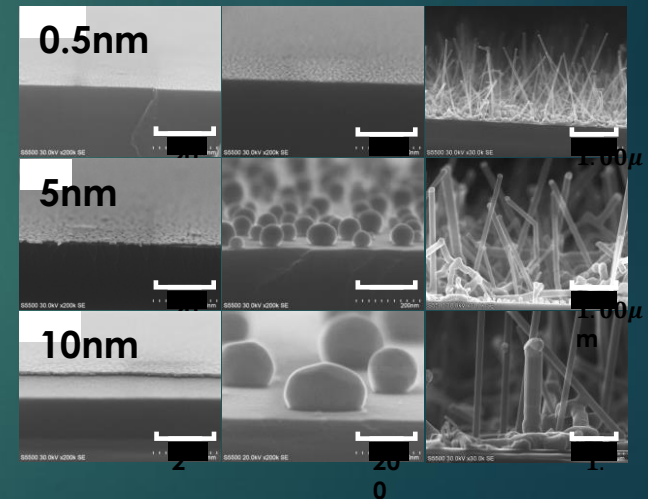
- ▶ Solar cells and semiconductor films: toward higher efficiency device / material
- ▶ Light emitting diode(LED) and laser diode(LD): toward infrared sensors and LED



X-ray diffraction analysis



Raman measurement system



SEM images of GaAs Nano-wires grown by Suzuki Lab.